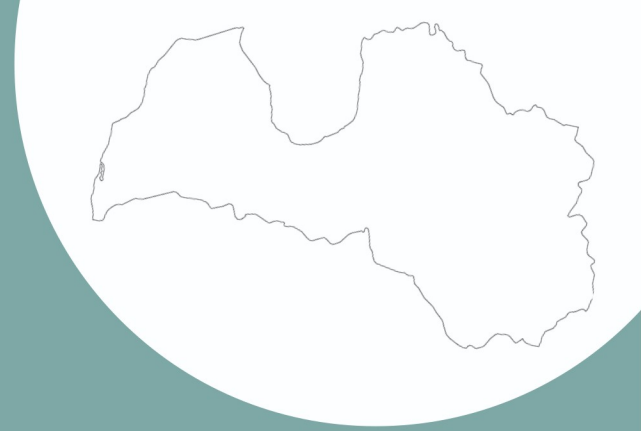


# About Latvia and Riga



Latvia is located in the Baltic region of Northern Europe. The total length of the border is 1,382 km.

The territory of Latvia is washed by the Baltic Sea from the west; its coastline is 498 km long. Forests cover 40% of the territory of Latvia.

The official language of Latvia is Latvian. It comes from the Indo-European language family and is one of the oldest languages in Europe. Nowadays only Lithuanian is related to Latvian, and these two languages make up a separate branch in the classification of languages of Europe.

**Labdien!**



Riga, the capital of Latvia with a population of about 717 000 inhabitants, is a modern city, which has a lot to offer in terms of history, culture and social life, was officially founded in 1201. Elegant Old Riga and its distinctive Art Nouveau architecture create a stimulating atmosphere for lively business and cultural life. The city - a former Hanseatic League member - is one of the oldest medieval European cities. Riga is listed by UNESCO as one of the most important cultural and natural sites. See more at the [Tourism information portal](#). 



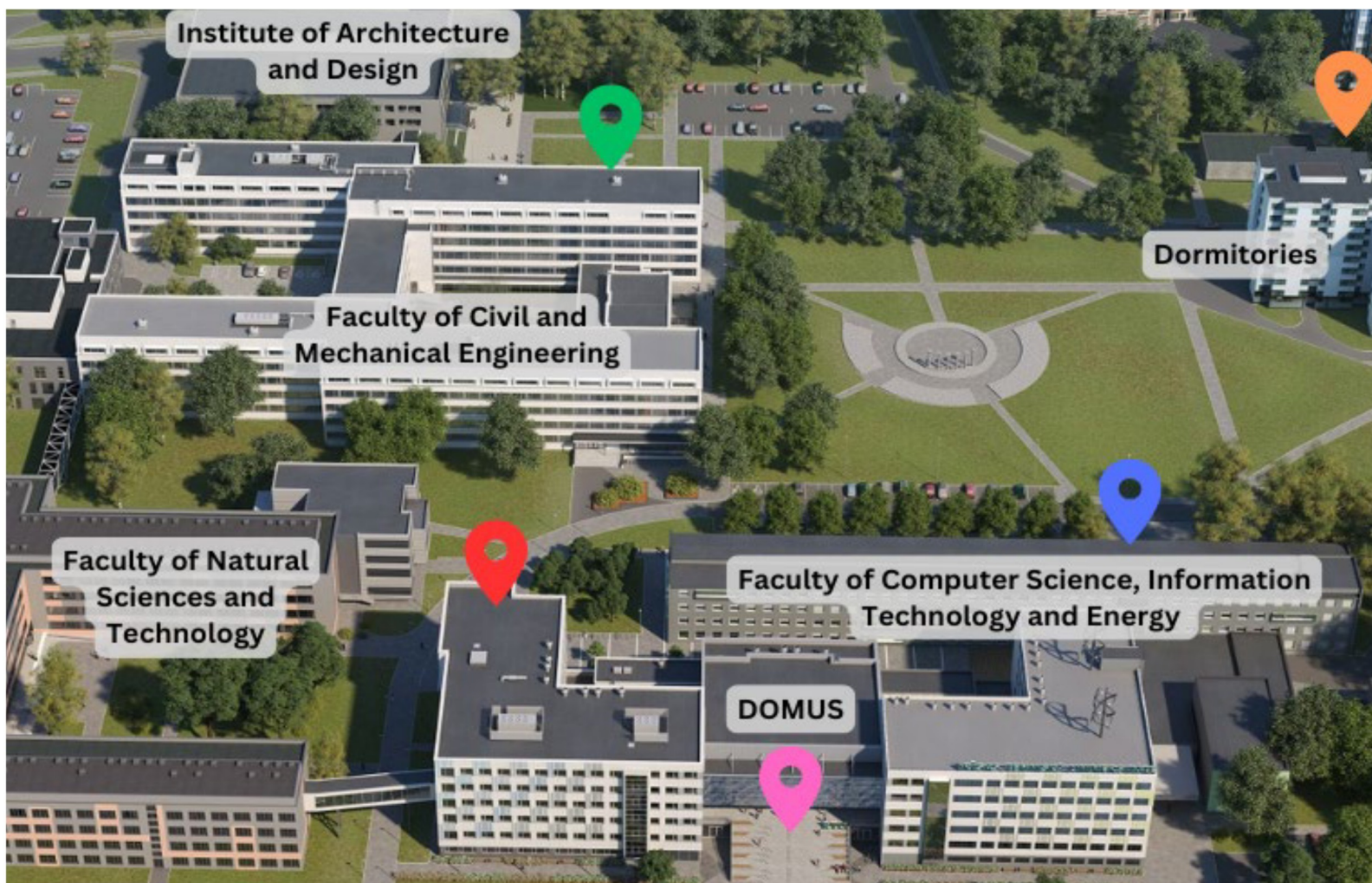
**Capital: Riga**  
**Population: ~1.9m people**  
**Currency: Euro**  
**Language: Latvian**  
**Time zone: GMT+2**



# RTU Ķīpsala Campus

RTU is the first higher education institution in Latvia that began construction of its campus at Ķīpsala in 1965. Ķīpsala (in Latvian - Ķīpsala) is an average sized island – around 2.7 km long and 500 m wide – situated on the left bank of Daugava river downstream in the middle of Riga. Now the RTU Ķīpsala Campus is striving to become the most advanced engineering study centre

in the Baltic region by developing various sustainable, smart and environmentally-friendly initiatives for the infrastructure of the Campus. Most of the Riga-based faculties, institutes of RTU are located in the Ķīpsala Campus. Depending on the aim and location of your visit/event, please, see the different annexes for a more detailed location guide.



-  **12 Āzenes street entrance**  
Faculty of Computer Science, Information and Technology and Energy
-  **10 Zunda krastmala entrance**  
Faculty entrance to DOMUS

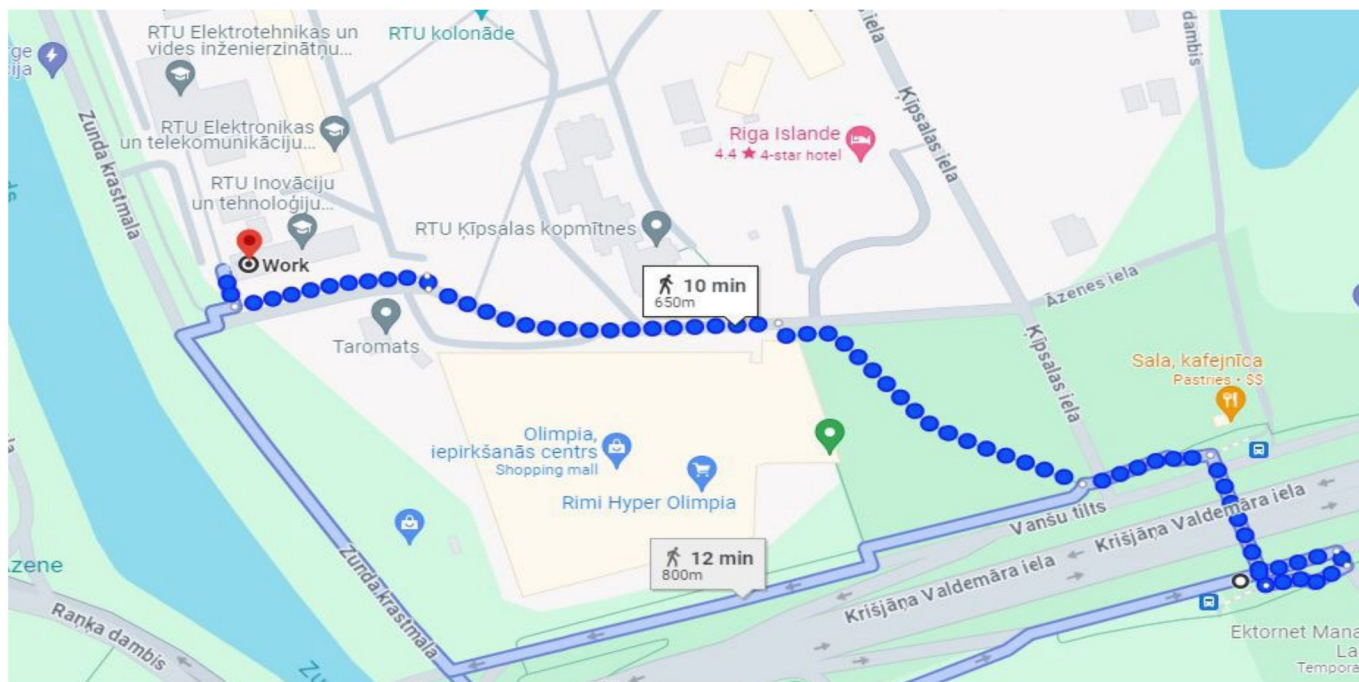
-  **6A Ķīpsalas street entrance**  
The Moon & Faculty of Civil and Mechanical Engineering
-  **6 Āzenes street entrance**  
11th floor Conference room
-  **8 Zunda krastmala entrance**  
Main entrance to DOMUS

[\\*Click here for a 360° tour of our Campus](#)



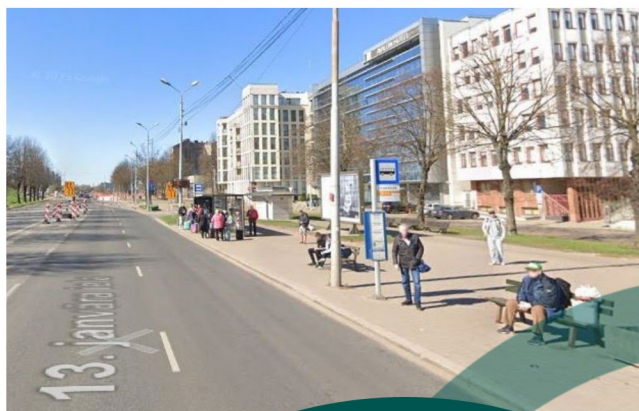
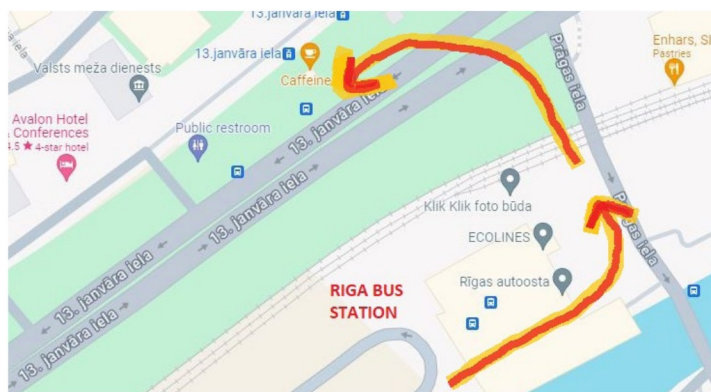
1. To come **from the airport to Ķīpsala**, you can follow this route:

- 1) Take the bus No. 22 from the airport
- 2) Get off at the bus stop Kauguru iela
- 3) On the same bus stop take the bus No. 53
- 4) Get off at the bus stop Ķīpsala
- 5) Walk for 6 min (450 m), follow the map below - you can use Google Maps for the direction



2. To get **from the airport to the Riga centre**, with the same bus No. 22, the best bus stop to get out at is Riga Bus Station (In Latvian: Autoosta)

3. **From the Riga Bus Station to Ķīpsala** there are various public transport routes you can use. Using Google maps for this helps a lot. For tickets Narvesen stores are in and near the Bus Station, ticket vending machines can be found in some underground passes and near public transport stops. A direct way without switching transports or walking long distances is - trolleybus No. 9. This trolleybus comes every ~30 minutes. The trolleybus stop is on 13th Janvāra street (13. janvāra iela). How to get to the bus stop - walking through the Bus Station, going away from the Bus Station and heading into the direction of the Old Town through the underground tunnel.



4. To come **from the Old Town to Ķīpsala**, you have to walk to the bus stop *Nacionālais teātris* and take any bus or trolleybus that goes across the bridge.

They usually come every few minutes and Ķīpsala is one stop away, just over the bridge.



### Mobilly

It is possible to buy passenger tickets, see the route timetables, pay for parking, etc. with your phone, using the Mobilly app. You can make a purchase and activate the ticket by scanning the QR code placed in the vehicle of your choice. After activating the ticket in the Mobilly app, you will receive a QR, which you can present to the controller if necessary.

\*The app is available for phone numbers from countries in the EU, Great Britain, Norway, Switzerland, Iceland, and Ukraine.



### Lux Express Shuttle Service

The journey from Riga Center to Riga International Airport (and vice versa) takes approximately 25 minutes. You can buy tickets for the shuttle service either from their website, [luxexpress.lv](http://luxexpress.lv), directly from the bus driver, at the Lux Express Sales Office in Riga Coach Station, or at the airport information desk.

### Regular taxis

Regular taxis are not very popular for commuting around Riga since everyone uses Bolt, however, there are options for taxis right outside the airport.

Taxis authorized to operate at Riga Airport are available for hire at the carriageway just outside the arrival halls. Presently, two licensed taxi brands, "XTaxi" and "TaksiLV," serve the airport. All vehicles under these brands have consistent tariffs for trips from the airport to Riga city centre, which are displayed on the car doors.

